



# GAT MONTHLY MEMBERSHIP PROGRESS REPORT

Results as of: 4/30/2023

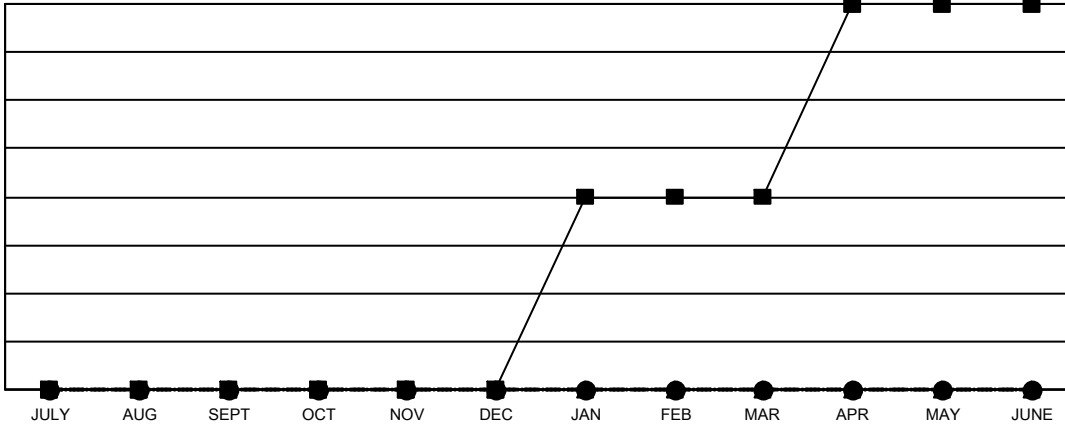
Multiple District 36

LOCATION: OREGON

Clubs			
RESULTS FOR 2022-2023			
QUARTER	NEW CLUB GOAL	NEW CLUBS	DROPPED CLUBS
JULY/AUG/SEPT	0	0	2
OCT/NOV/DEC	0	0	1
JAN/FEB/MAR	2	0	1
APR/MAY/JUNE	2	0	0

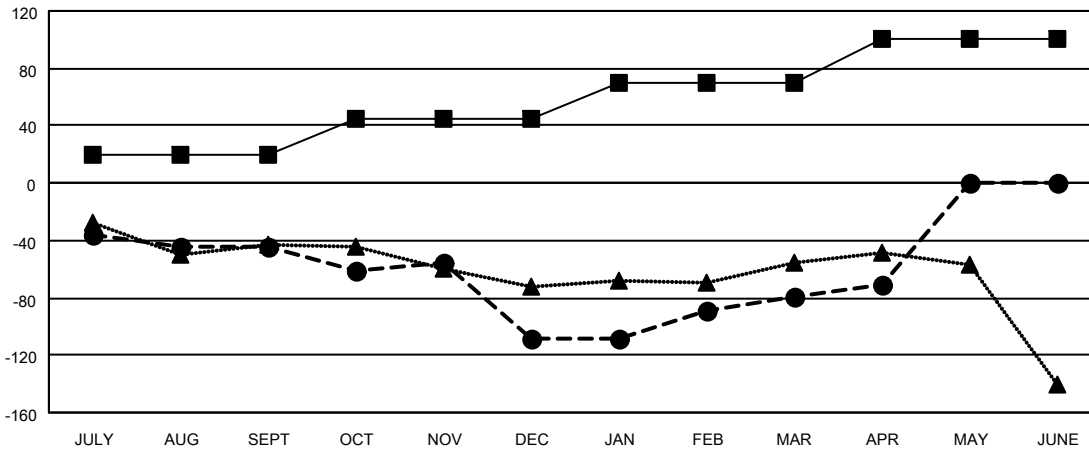
Members			
RESULTS FOR 2022-2023			
QUARTER	MEMBER GROWTH NET GOAL	MEMBER GROWTH ACTUAL	DROPPED MEMBERS ACTUAL (including transfers)
JULY/AUG/SEPT	20	102	129
OCT/NOV/DEC	25	84	141
JAN/FEB/MAR	25	108	70
APR/MAY/JUNE	31	30	15

GOALS AND ACTUAL NEW CLUBS CUMULATIVE



- CURRENT YEAR GOALS FOR NEW CLUBS
- CURRENT YEAR ACTUAL NEW CLUBS
- ▲- LAST YEAR ACTUAL NEW CLUBS

GOALS AND ACTUAL MEMBERS CUMULATIVE



- MEMBER GROWTH NET GOAL
- MEMBER GROWTH ACTUAL
- ▲- LAST YEAR MEMBERSHIP ACTUAL

DROPPED CLUBS: 4	69 CLUBS OF 127 ADDED 1 OR MORE NEW MEMBERS	<b>GENDER DISTRIBUTION</b>
<b>DROPPED MEMBERS</b>	<a href="#">CLICK HERE FOR CUMULATIVE MEMBERSHIP DATA</a>	MALE 1,632 (57.61%)
DECEASED 60		FEMALE 1,200 (42.36%)
CLUB CANCELLED 17		NON BINARY 1 (0.04%)
OTHER 278		PREFER NOT TO ANSWER 0 (0.00%)
<b>TOTAL 355</b>		<b>TOTAL FAMILY UNIT MEMBERS 738</b>
		<b>FAMILY MEMBERS PAYING HALF DUES 377</b>